

Coming of Railroad Created Big Excitement

Much activity and excitement was occasioned by the "coming of the railroad."

The towns of Bronte and Fort Chadbourne were moved, land prices soared, new business were started and hope in general were more than high. Much of this reflected in other stories in his newspaper and one lady told us that as soon as the trains started coming through, at one time as many as five trains daily, the big entertainment as to go "to meet the train to see who got on and who got off" and that on Sunday, they always dressed up to "go meet the trains."

The following story was sent to us by the Public Relations Department of the Atchison, Topeka and Santa Fe Railway System, Chicago, Ill.:

"When the location engineers for the Panhandle and Gulf Railway Company surveyed through Bronte shortly after the turn of the century they found a thriving community with business establishments consisting of a hotel, restaurant, four stand gin, stable, post office and a blacksmith shop. The name Bronte had been chosen in honor of

Charlotte Bronte (Mrs. A.B. Nicholls) an English novelist who was born in 1816 and died in 1855.

"March 1903 found a force of 50 teams and 150 men working north from San Angelo with 15 miles of grade completed. The name of the railroad changed from Panhandle and Gulf Railway Company to the Kansas City, Mexico and Orient Railway Company of Texas on September 16, 1905. It was late in the year 1907 before the line through Bronte, between Sweetwater and San Angelo, was completed.

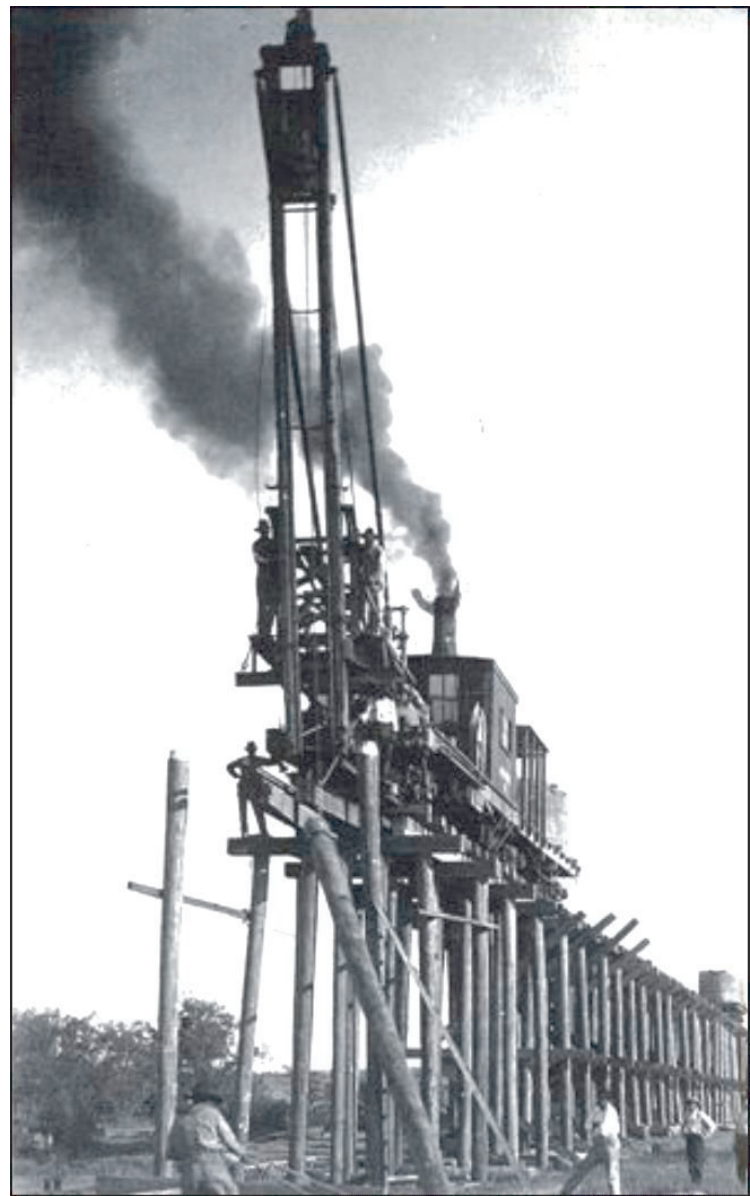
"When the station building was constructed in 1911 Bronte had a population of approximately 100. The stone for the building was donated by the citizens of the town.

"The Kansas City, Mexico and Orient Railway Company of Texas was purchased and has been under the control of the Atchison, Topeka & Santa Fe Railway Company since 1928. Records indicate that the first Santa Fe agent at Bronte was Mr. E. F. Maddux in 1929. He was followed in 1930 by Mr. H.O. Whitt who served until his recent retirement

and was succeeded by the present agent, Mr. J.F. Haynes."

In much discussion with local residents, checking records, etc., it is the opinion of the Enterprise that trains did not come through Bronte until 1909. Records at the court house indicate that the first train through Fort Chadbourne, Bronte and Tennyson was Nov. 22, 1909. They had 28.1 miles of track in Coke County before a 20-mile spur line was built from Mary Neal to Silver in 1956, part of which is in Coke County.

The depot building referred to above in the release from Santa Fe was built by "Big Jim" Slammers, father of Vernon Lammers, Leslie Lammers and Mrs. John Coalson. He was a stone mason. Vernon Lammers



Railroad Construction! This pile driver was essential in building the railroad bridge across the Colorado River south of Bronte in 1907.

said the stone came from Emerson place, southeast what is now the Taylor of Bronte.

COKE-STERLING COUNTY FARM BUREAU

MISSION

Texas Farm Bureau's mission is to be the Voice of Texas Agriculture

Our vision is for all Texans to benefit from a prosperous agriculture that provides for a viable, long-term domestic source of food, fiber and fuel.



TEXAS FARM BUREAU

Coke-Sterling County Farm Bureau Has ...

1. 647 members as of 2013
2. Helped Develop Policies of State and National Farm Bureau.

Programs and Benefits Sponsored By Farm Bureau...

1. Food Connection Week
2. Youth Leadership Conference
3. Agfund
4. Farm Bureau Bank - Loans - Auto, Recreational Vehicles, Boats, Equipment Loans, Credit Cards, Bank accounts (Checking and Savings), Certificates of Deposit
5. Member Discounts on - New GM Vehicles, Dell PC, Hotel, Rental car, Case IH, Amusement Park tickets and Movie Tickets to name a few.
6. Service Program:
 - Insurance - Auto, Home, Life, Health, Annuities, IRAs and Estate Planning

**Happy Birthday
Coke County!**

**PAUL'S
BODY SHOP**

Paul Knight
123 N. State • Bronte
(325) 473-2425 • (325) 450-2281